

Elevate | Inspire | Innovate | Energize

Nursing2013[®]

THE PEER-REVIEWED JOURNAL OF CLINICAL EXCELLENCE

www.Nursing2013.com

Tackling Concussion⁵⁰

Register now!

Nursing2013 Symposium in Las Vegas, Nev., March 19-22.
www.nursingsymposium.com

JANUARY • VOL. 43 NO. 1

บริษัท เมอร์คิวรี ดาต้า จำกัด

1,551 bath

เลขที่ 59/70 หมู่ที่ 6 ถนนงามวงศ์วาน

แขวงทุ่งสองห้อง เขตหลักสี่

กรุงเทพฯ 10210 โทร. 0-2591-6515,16

Nursing
SERIALS



003242
bib:13399108162

**CE THERAPEUTIC
HYPOTHERMIA 30**

**CE BLOOD MANAGEMENT
BEST PRACTICES 40**

**LIVING DONOR RENAL
TRANSPLANT 58**



Wolters Kluwer
Health

Lippincott
Williams & Wilkins

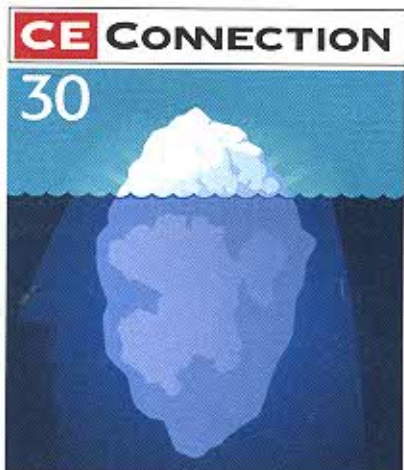
Nursing2013®

features

30 Improving outcomes with therapeutic hypothermia

By Linda Bucher, PhD, RN, CEN, CNE;
Rolma Buruschkin, BSN, RN; Dina M.
Kenyon, BS, RN; Kelley Stenton, RN; and
Susan Treseder, BSN, RN

Update your knowledge about this super-cool therapy that protects the brain and preserves long-term neurologic functioning in selected patients. These guidelines will help prepare you to care for these patients during every phase of treatment.



For immediate CE test processing, see our website at <http://www.nursingcenter.com/ce/nursing>.

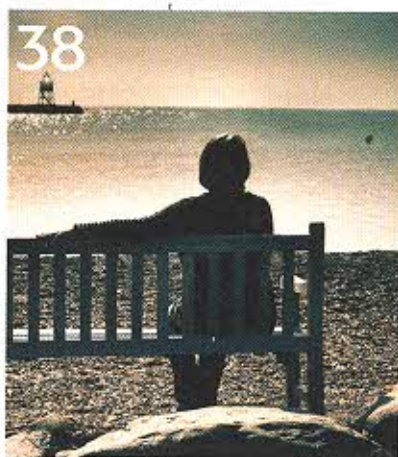
38 SHARING Nurse mom

By Sheri Miller, RN, CRNI
Being in practice for 30 years helped
prepare this nurse for her greatest
challenge—caring for her dying son.

50 Tackling long-term consequences of concussion

By Colleen Norton, PhD, RN, CCRN;
Shara J. Feltz, BSN, RN; Angela Brocker,
MS, RNC-NIC; and Margaret Granitto,
MSN, RN, CRNP

Are you up-to-date on emerging data about the long-term consequences of concussion? Research shows that youth athletes are especially vulnerable to lasting brain damage from repeated concussions. Be prepared to assess and care for patients with a potential concussion, teach patients, families, and coaches how to recognize the often-subtle signs and symptoms, and help to minimize risks to children and adolescents.



40 Blood management: Best-practice transfusion strategies

By Deborah J. Tolich, MSN, RN; Sheila
Blackmur, MSN, RN; Ken Stahorsky, MBA,
RN; and Danita Wabeke, BA, RN

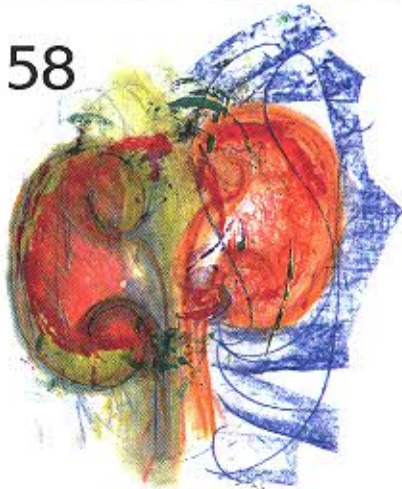
Adopting blood management practices can lower both the risks and costs associated with unnecessary blood transfusions. Learn about patient-centered strategies and techniques that improve patient outcomes by reducing, eliminating, or optimizing the use of blood transfusions to treat anemia.

58 Living donor renal transplant: A gift of life

By Carmel T. Ficarelli, MSN, RN, FNP;
MaryAnn Edelman, MS, RN, CNS;
and Bridget H. Weeks, MS, RN, CEN,
PNP-C, FNP

For patients with chronic kidney disease facing long-term dialysis, a kidney transplant from a living donor may be the best option for achieving a better quality of life and improving life expectancy. Explore the health and ethical issues involved for both the donor and recipient of this gift of life.

58



> ONLINE-ONLY CONTENT <
at www.Nursing2013.com

Geriatric syndromes and their implications for nursing

By Tricia Brown-O'Hara, MSN, RN

25 Nursing2013 Symposium

Paris Hotel & Casino
Las Vegas, Nevada
March 19-22, 2013

Sign up now at
NursingSymposium.com!

Nursing2013[®]

departments

Our mission at **Nursing2013** is to improve nursing practice by providing evidence-based practical information with a reader-friendly approach.

Winner of the 2012 silver Folio award for best full issue!

10 EXIT



6 EDITORIAL

Look for the story behind the story

8 LETTERS

Never stop learning...do your fellow nurses have your back?...tragic ending

9 DRUG NEWS

Similar results for oral versus parenteral regimen for urinary incontinence...new drug approved for rheumatoid arthritis...two treatments compared for type 2 diabetes...varenicline doesn't raise cardiovascular risk

10 ADVICE P.R.N.

Leaving against medical advice...can hospitals decline to accept a patient transfer?...heads up about head-down positioning

12 MEDICATION ERRORS

Drug label missing critical information...burn injury from topical analgesic...FentaNYL overdose risk...don't send unused medication home with the patient

14 TRANSITIONS

What do families really hear us say?

16 INSPIRING CHANGE

Reducing urinary catheter days

21 CLINICAL ROUNDS

Nurses' perceptions about quality of care are right on...simple nursing intervention tames MRSA...fecal transplantation highly effective for patients with *C. difficile* infections...and more

21



20 About Nursing2013

70 Advertisers' Index

71 Careers & Events

CEs coming next month

Treating symptomatic varicose veins

New drugs2013, part 1

Visit us on the Web...

at www.Nursing2013.com



Join us on Facebook

LOG ONTO Facebook.com

SEARCH NsgJournal

CLICK on Like!



Follow us on Twitter

www.twitter.com/NsgJournal

Nursing2013 (ISSN 0360-4039; online ISSN 1538-8689) is published monthly by Lippincott Williams & Wilkins at 16522 Hunters Green Parkway, Hagerstown, MD 21740-2116, with editorial and advertising headquarters at 323 Norristown Rd., Suite 200, Ambler, PA 19002-2758. Periodicals postage paid at Hagerstown, MD 21740 and at additional mailing offices. Copyright © 2013 by Wolters Kluwer Health | Lippincott Williams & Wilkins. All world rights reserved. Postmaster: Send changes of address to *Nursing2013*, P.O. Box 1550, Hagerstown, MD 21740.

The publisher disclaims responsibility for adverse effects resulting directly or indirectly from suggested procedures/medication dosages or the reader's misunderstanding of the content. All published patient initials are fictitious to protect confidentiality. Any similarity to actual individuals is purely coincidental.

72



64 PATIENT SAFETY

Promoting healthy work hours for nurses

66 WOUND CARE

Understanding compression for venous leg ulcers

69 CLINICAL QUERIES

Mechanical thrombectomy for acute ischemic stroke

72 ACTION STAT

Posterior epistaxis

Free!

Sign up for **Nursing2013 eNews**, a monthly e-mail newsletter, for breaking nursing and healthcare news, clinical updates, free article downloads from the current issue, and more! Go to

www.nursingcenter.com/regpages/nursingenews.asp to register.